

Illinois Cancer Collaborative COVID-19 Working Groups Kick-Off Meeting

September 3, 2020



**Illinois Cancer
Collaborative**

ilcancer.org

ILCC Kick-Off: Agenda

- ILCC Refresher
- COVID-19 Working Groups Introduction
- Introduction to Future Activities: Local Cancer QI Teams
- COVID-19 Working Groups Breakout Sessions
 - Detailed overview and instructions
 - Separate into Working Groups

The Illinois Cancer Collaborative (ILCC)



The ILCC is a *first-of-its-kind* collaborative, addressing the unique challenges that all hospitals face in providing care to cancer patients during the COVID-19 pandemic

Mission

To convene a multidisciplinary learning collaborative of Illinois hospitals improving the safety and quality of care for cancer patients

Vision

Engage providers to deliver patient-centered, high-quality cancer care across Illinois during, and after, the COVID-19 pandemic

Cancer and COVID-19 in Illinois



Cancer care has been disrupted in many ways by the COVID-19 pandemic

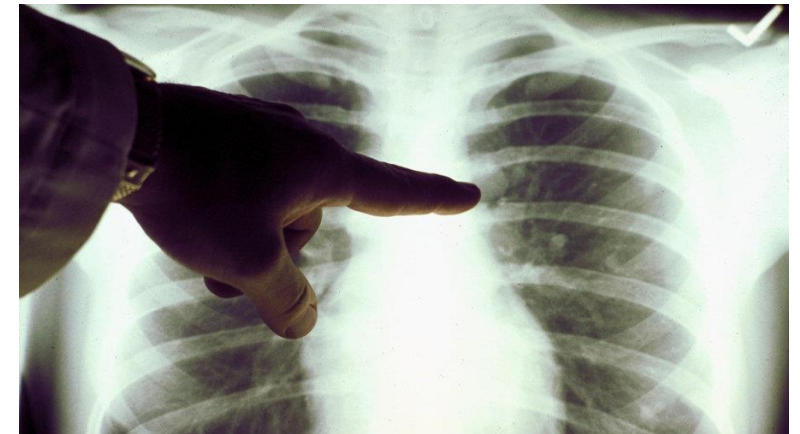
There is a *lack of established guidelines and data* for cancer care during the COVID-19 pandemic, with a *rapidly changing landscape*

Hospitals and oncologists are often left on their own to understand the best ways to care for & triage cancer patients

There is an opportunity to work together to share experiences, expertise, and policies around caring for cancer patients in Illinois during COVID-19 recovery and through additional surges

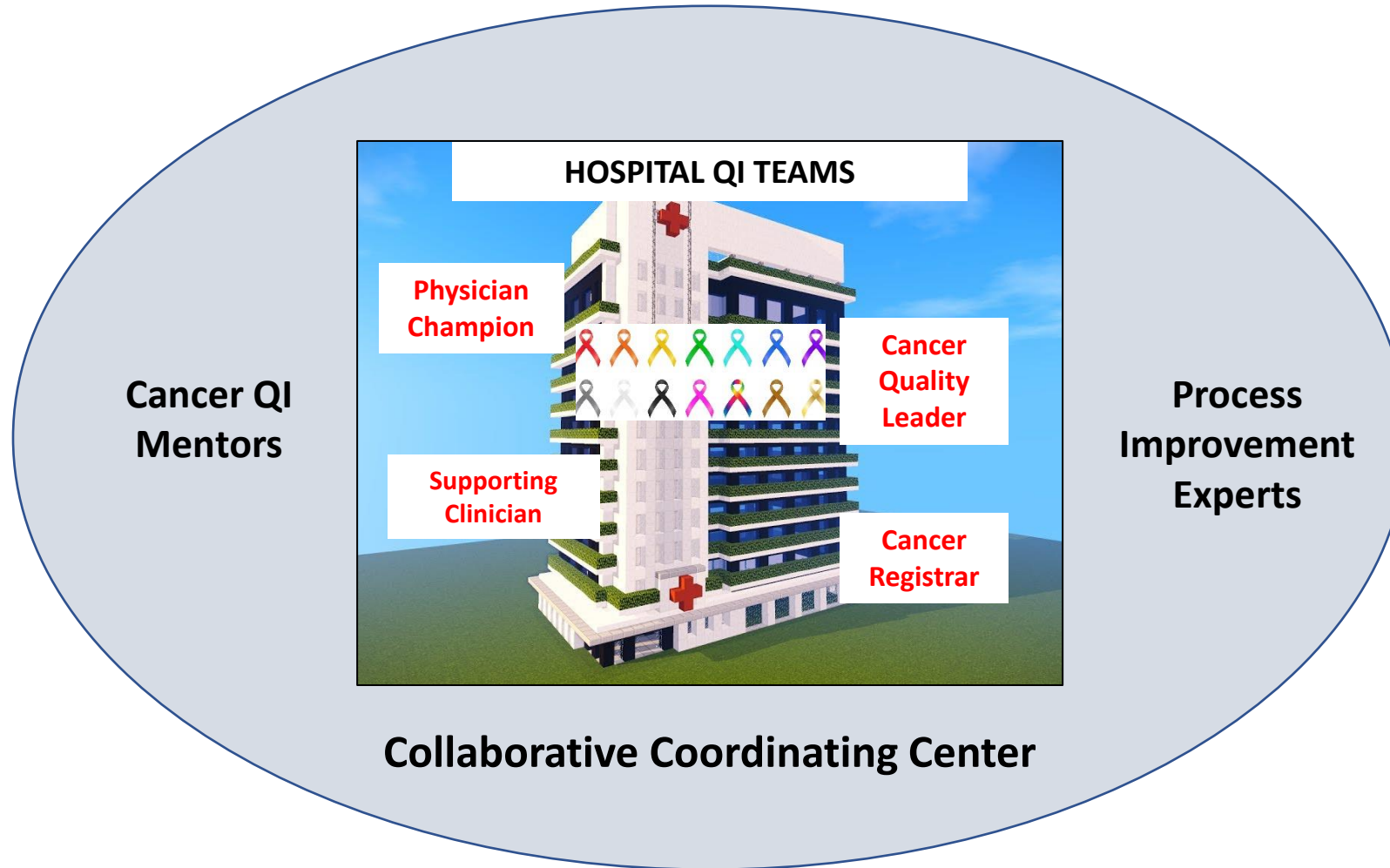
The ILCC Approach to Cancer QI

- **Centralized Coordinating Center**
- **Training** in Quality Improvement (QI)/Process Improvement (PI) methods
- **Mentorship** for local Cancer QI Teams
 - Mentors: oncologists with QI/PI experience
 - Coaches
- **Augmented Registry Data**
 - Process Measures
 - Performance Reports
- **Local implementation of QI: ILCC Cancer QI Teams**



ILCC Cancer Quality Improvement Teams

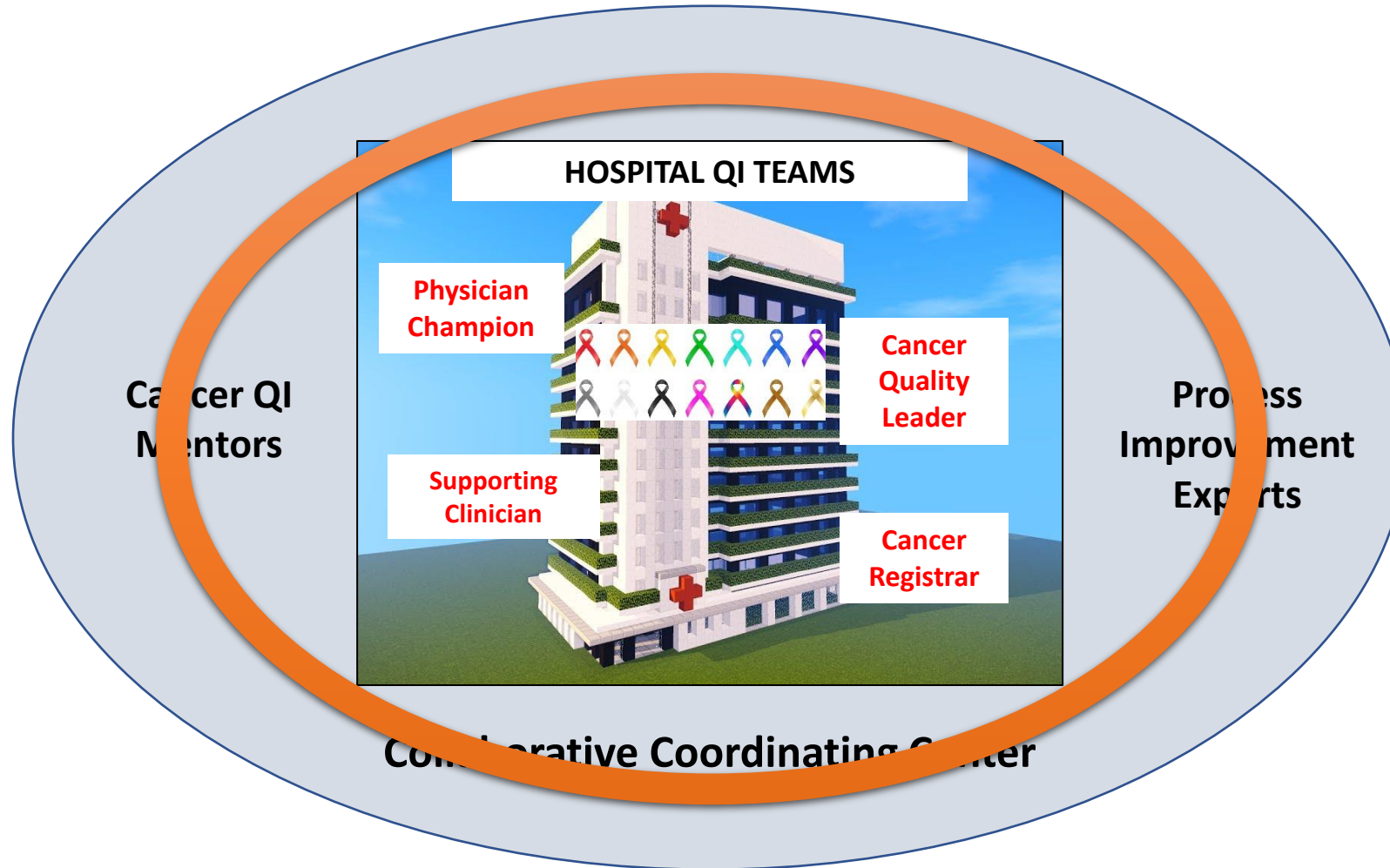
Empowering Cancer Care Improvement Locally



ILCC Advisory Committee

ILCC Cancer Quality Improvement Teams

Empowering Cancer Care Improvement Locally



ILCC Advisory Committee

ILCC Cancer QI Team Members:

- **Physician Champion**

- Team and implementation leader (“face” of ILCC)
- Secures buy-in and support of hospital leadership and other key stakeholders
- Provides clinical expertise.



ILCC Cancer QI Team Members:

- **Physician Champion**
 - Team and implementation leader
 - Secures buy-in and support of hospital leadership and other key stakeholders
 - Provides clinical expertise.
- **Supporting Clinician**
 - Work with Champion to design and implement projects
 - Identifies/creates necessary resources in with other team members.
 - Can be MD, APP, or RN, preferably in different oncology specialty.



ILCC Cancer QI Team Members:

- **Physician Champion**

- Team and implementation leader
- Secures buy-in and support of hospital leadership and other key stakeholders
- Provides clinical expertise.

- **Supporting Clinician**

- Work with Champion to design and implement projects
- Identifies/creates necessary resources in with other team members.
- Can be MD, APP, or RN, preferably in different oncology specialty.

- **Cancer Quality Lead**

- Partners with team to implement projects, oversee project milestones and deliverables, organize team meetings.
- Connects ILCC work with institutional quality structure



ILCC Cancer QI Team Members:

- **Physician Champion**
 - Team and implementation leader
 - Secures buy-in and support of hospital leadership and other key stakeholders
 - Provides clinical expertise.
- **Supporting Clinician**
 - Work with Champion to design and implement projects
 - Identifies/creates necessary resources in with other team members.
 - Can be MD, APP, or RN, preferably in different oncology specialty.
- **Cancer Quality Lead**
 - Partners with team to implement projects, oversee project milestones and deliverables, organize team meetings.
 - Connects ILCC work with institutional quality structure
- **Cancer Registrar**
 - Data expert.
 - (Eventually) Abstracts ILCC-specific data, helps report data to team and institution.



Building your ILCC Cancer QI Team

- Begin discussions within your oncology leadership about selecting your ILCC Champion
- Begin reaching out to candidates to assess their willingness/motivation to participate
- **Your Champion (team lead) will be the most important choice you have to make**



Systematic Review

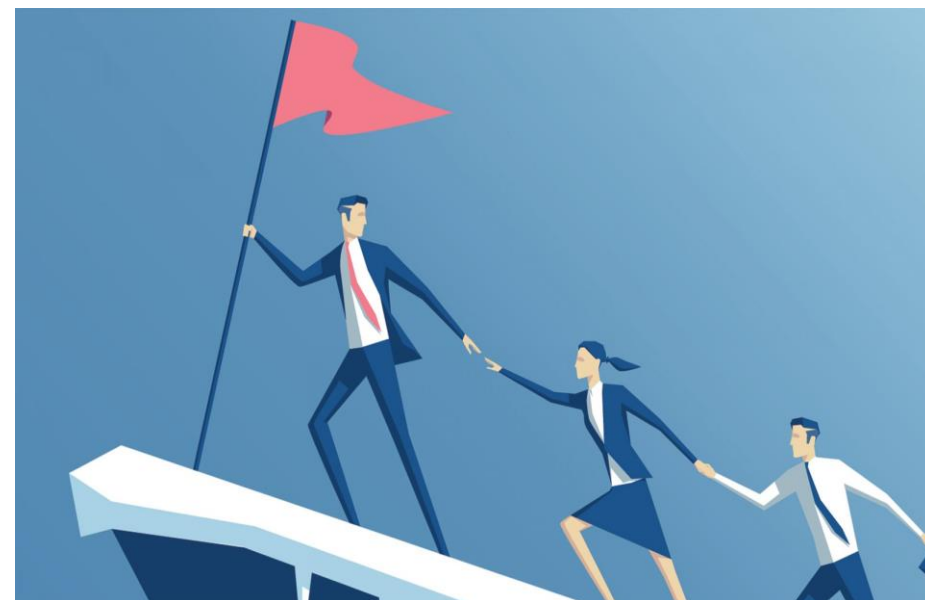
**Inside help: An integrative review
of champions in healthcare-related
implementation**

Edward J Miech^{1,2,3,4} , Nicholas A Rattray¹, Mindy E Flanagan¹,
Laura Damschroder⁵, Arlene A Schmid⁶ and Teresa M Damush^{1,2,7}

Choosing your ILCC Champion

Characteristics of a successful Champion:

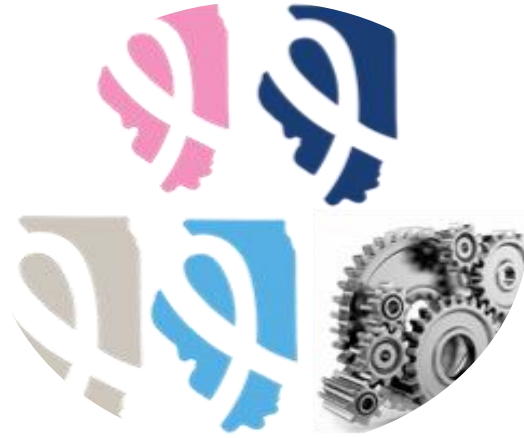
- **Passion for improving care**
 - “Tenacious advocate”
- **Respect – clinical and personal**
- **Leadership**
 - Named leadership position (CLP, Cancer Committee Chair/Vice Chair)
- **Motivator and Advocate**
- **Communication Skills**
 - Team members
 - Connection with leadership
 - Key stakeholders (across service lines)
- **Interested in understanding/using data for QI**
 - We can/will help with this



Our Ask of You

- Identify and confirm participation of your ILCC Champion – **Nov. 1, 2020**
- Work with ILCC Champion to identify/confirm other ILCC Cancer QI Team Members for your hospital – **Dec. 15, 2020**

Plan for quality activities to begin in early 2021



ILCC COVID-19 Working Groups Kick-Off



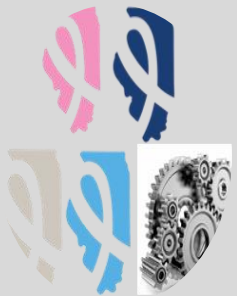
Working Group Breakout Session Instructions

- If you have not already expressed interest in a group – please message us in the Chat box of which group you would like to attend today
 - We need to assign you to the breakout room.



ILCC Working Groups - Today

- Meet and greet with your working groups
- Discuss topic and deliverable



Theme:

Develop recommendations for care if resurgence COVID-19 requires widespread shutdowns and delays in care

Deliverable

ILCC Consensus Guideline Statement for COVID-19 Cancer Care in your working group focus area.

Released to public in early November.

ILCC Working Group Topics



Temporizing treatment recommendations if surgery delayed

Breast



Use of chemotherapy in colon cancer if surgery is delayed

Colorectal



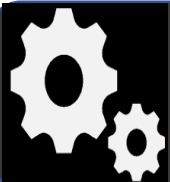
Impact of delayed/deferred operative care for early stage lung cancer

Lung



Triage priority for patients who require surgical treatment with temporizing treatment recommendations if surgery delayed

Prostate



Ambulatory visitor policy recommendations
for safe care of oncology patients

**Oncology
Operations**

ILCC Coordinating Center Support



Anthony Yang, MD, MS
Breast Cancer Lead
Operations Co-Lead



Ryan Merkow, MD, MS
Colorectal Cancer Lead



Greg Auffenberg, MD, MS
Prostate Cancer Lead



Dave Odell, MD, MMSc
Lung Cancer Co-Lead
Operations Facilitator



Timothy Kruser, MD
Lung Cancer Co-Lead
Radiation Oncology Lead



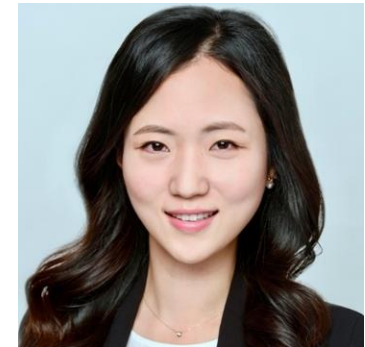
Rebecca Caires, MBA
Operations Co-Lead



Chelsea Fischer, MD
Fellow



Brian Brajcich, MD
Fellow



Rachel Joung, MD
Fellow

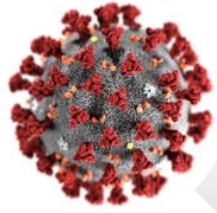
ILCC Working Groups Breakout Sessions

- Introductions
- Finalize your topic
- Assign responsibilities
- Identify (roughly) your next meeting and frequency of meetings (if possible)
- If time, begin discussion

Deliverable

ILCC Consensus Guideline Statement for COVID-19 Cancer Care in your working group's focus area to be released to public in early November

Summary and Next Steps



Determine a schedule within your focus groups to develop your ILCC COVID-19 Cancer Care Guideline
(goal for guidelines release: early November)



Identify & finalize your hospital's ILCC Champion by
November 1



Identify & finalize your hospital's ILCC Cancer QI team by
December 15th



Next ILCC webinar tentatively scheduled for **mid-November**

Working Group Breakout Session Instructions

- Please remember to **keep yourself muted** if you are not speaking
- We encourage you to use the **Chat Box** to pose your questions to your working group's lead(s)
- If possible, we prefer that you **turn your camera** on in your groups
- Those not involved in working groups are welcome to sign out of the meeting



Questions?

Tony Yang, MD, MS
Director

Brianna D'Orazio, MPH
Administrative Coordinator

John Slocum, MPH
Project Coordinator

Reach us at info@ilcancer.org
Website: ilcancer.org

